

PROJECT

04

Rutherford
HOUSE
by Dorrington
Architects & Associates

• TAUPO •



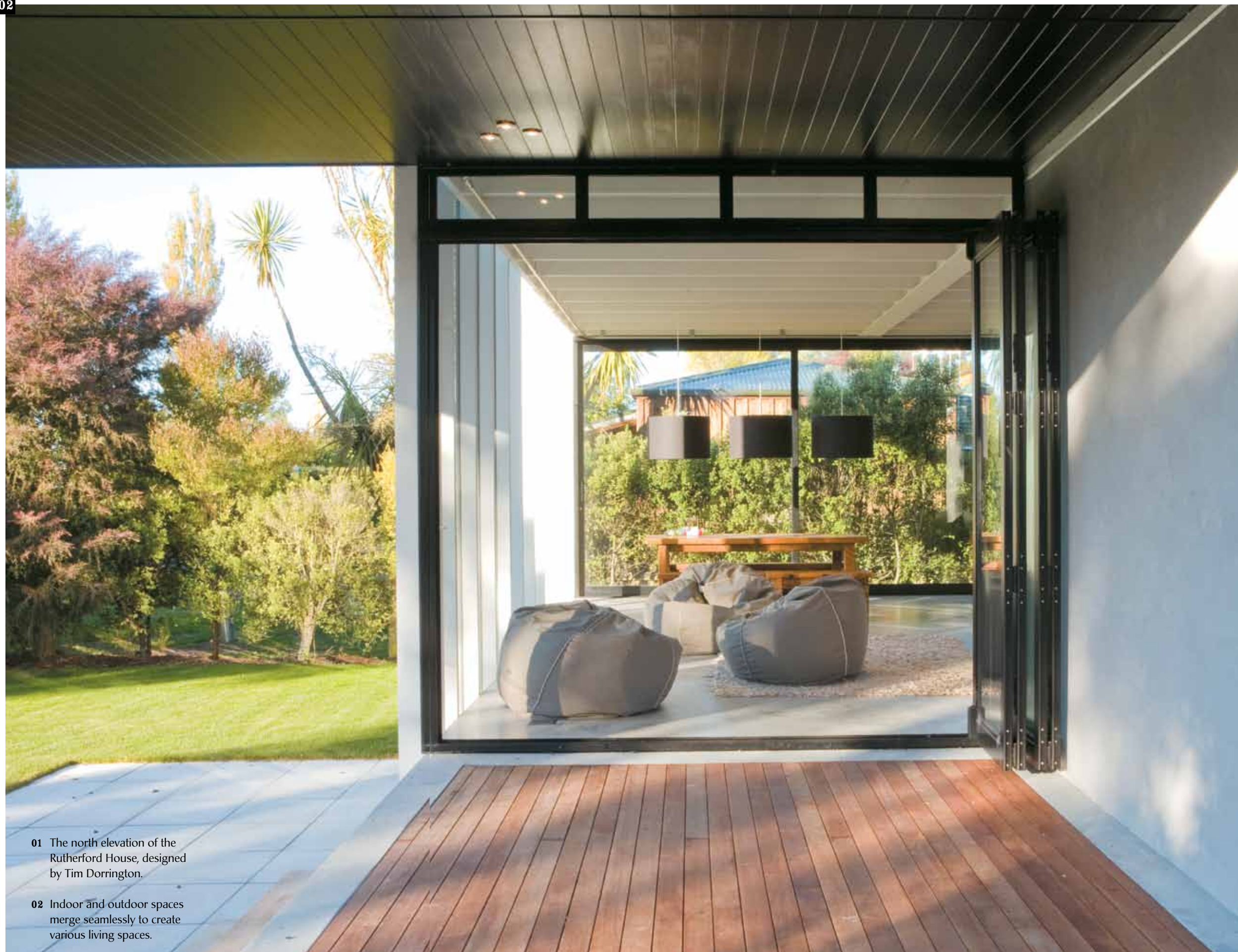
Tim Dorrington combines his signature refined aesthetic with a relaxed plan to create a holiday house in Taupo that works for the occupants in both summer and winter.

Photography by [Emma-Jane Hetherington](#)

The Rutherford House sits on a spit of land bounded on one side by the trout fishing Tauranga Taupo River and on the other by a Department of Conservation reserve that borders Lake Taupo. The brief given to Auckland architect Tim Dorrington was to create a modern holiday house suitable for the hot summers of Lake Taupo and the cold winters when the clients use it for skiing on Mount Ruapehu. The house also needed to work for the use of the immediate family as well as extended family and friends.

Dorrington's design solution was to set up four main elements. The first consists of the concrete base that, at moments, folds up to contain interior space, the second and third elements are two black cedar-clad bedroom blocks, and the fourth is a white, glazed verandah-like space that one of the black boxes appears to slip under. These elements, while creating a masterly composition of form, void, materiality and texture, are also practical: The concrete base satisfies flood-plain requirements and provides opportunities for intermediate zones between inside and out; the two cedar boxes establish private space within the building envelope; and the verandah-like space allows light to stream in.

In plan, the separation of rooms is relatively informal, but spaces to suit differing climates, activities and degrees of privacy are defined by layers of materials and positioning. The large, concrete-floored verandah-like space encloses the kitchen, lounge and dining functions, and lowered off this space is a snug with a fireplace which on colder days can be closed off. A bunk room attached to the garage offers an escape for the children and a place for guests to stay, and a sitting room off the upper level, adjacent to the master bedroom, provides a more private domain. Living areas spill into the outdoors, and intermediary covered but exposed spaces offer transition points from the outside to the inside and provide shade in summer and protection from the rain in winter. While Rutherford House has Dorrington's signature refined designed and built aesthetic, its relaxed planning and materiality means that it operates successfully as a holiday house that one can come into, and live in, with minimal effort. **H**



01 The north elevation of the Rutherford House, designed by Tim Dorrington.

02 Indoor and outdoor spaces merge seamlessly to create various living spaces.

03



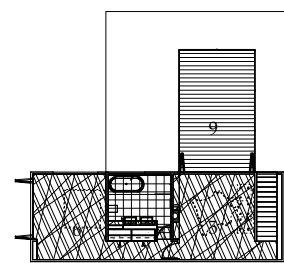
05



04

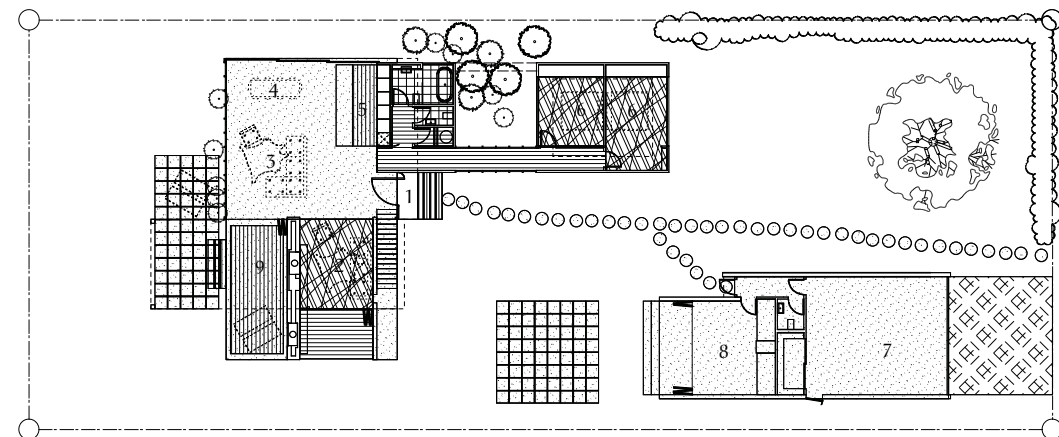


- 03 The kitchen appears as a simple insertion into the folded concrete-box element of the house.
- 04 Looking from the casual living area out to the dense bush that surrounds the site.
- 05 Dorrington has used materials to define layers of living spaces, creating varying degrees of privacy and warmth.



Level-one plan

- 1 Entry
- 2 Snug
- 3 Living
- 4 Dining
- 5 Kitchen
- 6 Bedroom
- 7 Garage
- 8 Bunk room
- 9 Deck



Ground-level plan



Architect

Dorrington Architects & Associates

1a Wanganui Avenue, Herne Bay
Auckland 1011
09 361 6688
www.dorringtonarchitects.co.nz

Practice profile

Dorrington Architects & Associates is an award-winning practice focused on innovative, contemporary design. The practice specialises in residential and boutique commercial architecture.

Project team

Tim Dorrington, Sam Atcheson

Consultants

Structural engineer: MH Design

Builder

Haimes Building

Products

Roofing: Butynol

External walls: Stained cedar rusticated weatherboards; bagged plaster on concrete block

Internal walls: Stained cedar rusticated weatherboards; bagged plaster on concrete block; Resene paint

Windows and doors: Contour Aluminium Systems

Climate control: Warmington Fires

Kitchen fittings: Metrix

Bathroom fittings: Metrix

Hard landscaping: Things Botanical

Time schedule

Design and planning: 12 months

Construction: 18 months

Project areas

Site size: 1100m²

Building area: 256m²